



**KOBRA Molds, L.L.C.**  
6555 Garden Road,  
Suite 17  
Riviera Beach, FL 33404  
USA  
Phone 001-561-842-6522  
Fax 001-561-842-9777  
kobrana@bellsouth.net



**KOBRA Formen GmbH**  
Plohnbachstraße 1  
08485 Lengenfeld  
Deutschland  
Telefon +49 37606 302-0  
Fax +49 37606 302-22  
www.kobra-formen.de  
post@kobra-formen.de

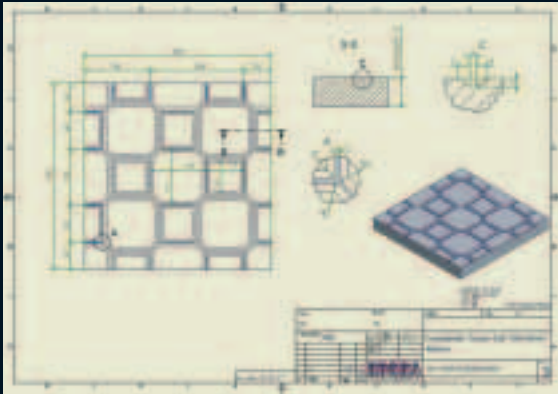
Surface Technology

# Surface Technology

**KOBRA**  
FORMEN

# Surface Technology

In addition to all standard shapes you can choose from a wide variety of special structured shoes.



All details of the shoes come off the 3D stone volume model

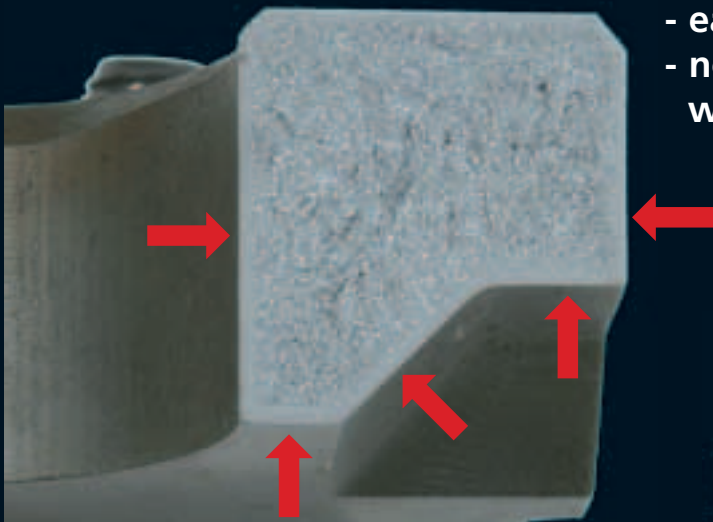


With laserscanners we realise almost every structure. For scanning we can use any material like wood, rubber, plastic, natural stone, etc. That opens an unlimited variety to chose from.

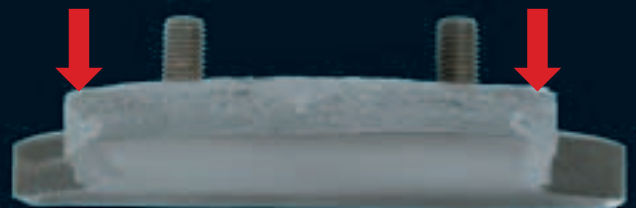
## POLYTEC®

### Advantages POLYTEC:

- longer lifetime
- less sticking
- easy cleaning
- no stains using white cement



All shoes, also for curbstones are POLYTEC hardened. The shoe sample shows the difference of the hardness depth.

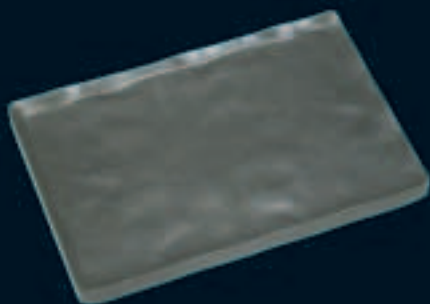


Old version, inductively hardened.

# POLYTEC - The best hardening technique



13.122019000013



11211292002



13515406004



10.3515996.00009



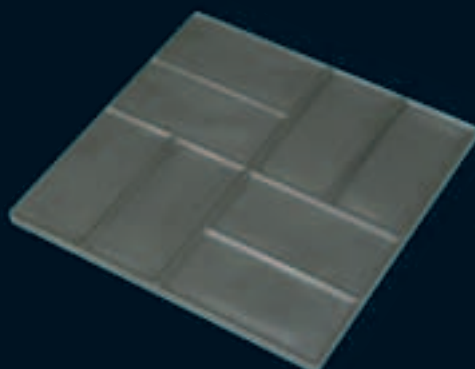
14309000007



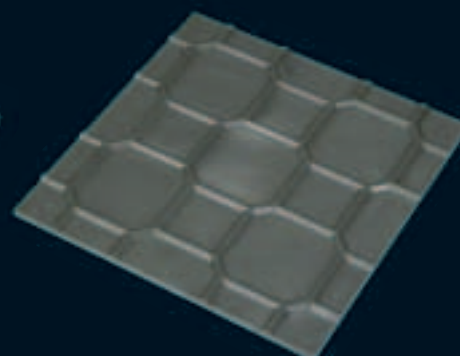
13515990000



11413010001



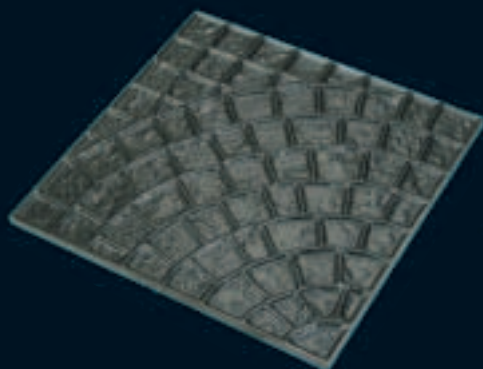
10.1110610.00004



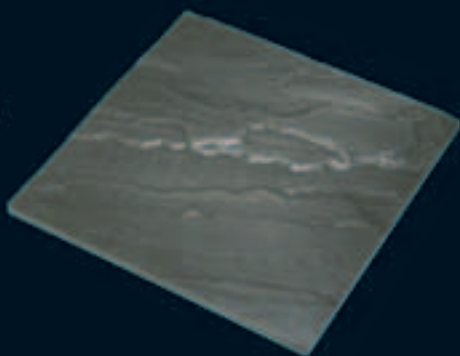
10.1110610.00008



10.1430020.00001



10.1120090.00007



10.1110602.00001