

MODULINE 3™

POWER »Moduline« molds describe different frame options, which are bolted around a completely CNC milled and hardened insert. All mold inserts are carbonized in KOBRA's own hardening furnace and are given the FORM »Optimill carbo 68 plus™« label. »Optimill« stands for the milling, which ensures exact angularity in the cavity, »carbo 68 plus« for the surface hardness of 68 HRC,

which is combined with an all-round hardness depth of 1.2mm.

The POWER »Moduline« line has different frame options, which can be installed depending on the concrete product to be produced. All frame types are based on the idea of fast and uncomplicated changing of the insert. One frame for different inserts. This option is available to KOBRA customers for the production of different products, not only in case of repair, but also for scheduled insert changes.

POWER »Moduline« is suitable for optimizing your mold stocks, since the basic mold with the interchangeable components is particularly easy to assemble.

**DESIGN
WITH
MOLDS.**



TOOLS. Molds. Driven by knowledge.

CARE. Service.

POWER »Moduline 3™«

Unlike the other design options of this technology, POWER »Moduline3™« has a stable one-piece frame, which is bolted onto the insert vertically. The insert and wearing parts are replaceable and the frame is reusable many times.

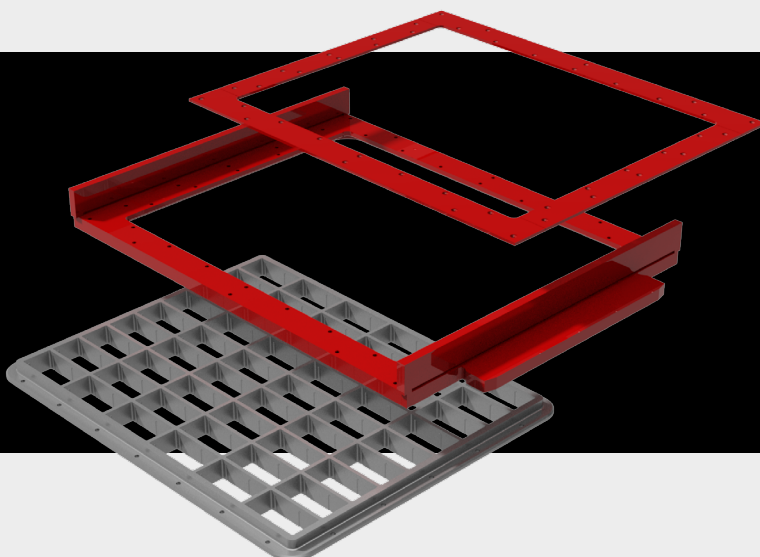
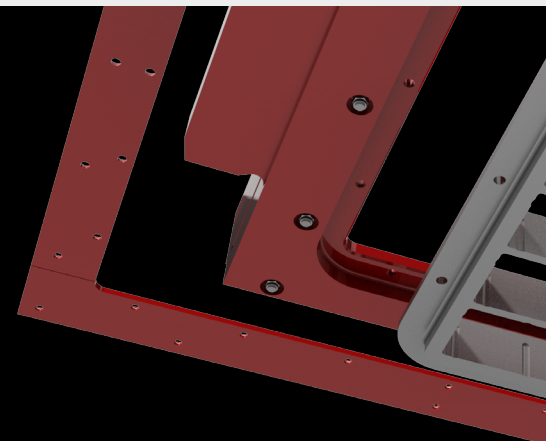
The tamper head is made up of a reusable adapter, with which plunger sections can be combined for the production of different blocks. The mold bottom contains the frame as the permanent constant, which can hold changeable inserts.

The resulting product options achieve enormous cost saving and a high degree of flexibility in production.

Facts & advantages:

- » Maximum mold accuracy due to internal KOBRA quality standard
- » Modular concept enables replacement of wearing parts
- » Higher cost efficiency through reuse of the frame and flange assemblies
- » Insert and wear plates in FORM »Optimill carbo 68 plus™« quality

POWER 
Moduline 3™



EXPERTISE AT
YOUR SIDE.

**WE ARE
HERE FOR YOU.**