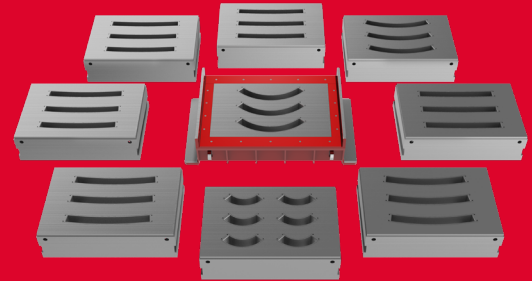


**REPLACE™**

POWER »Replace™« was developed for the production of small series products. The frame and insert in the mold bottom are joined by a retainer lock. It is possible to switch between different inserts easily and in next to no time, since the locking is achieved completely without bolts. This technology assists flexible production planning

**DESIGN  
WITH  
MOLD.**

and offers a large potential for time and cost savings in the project-based production of block systems.



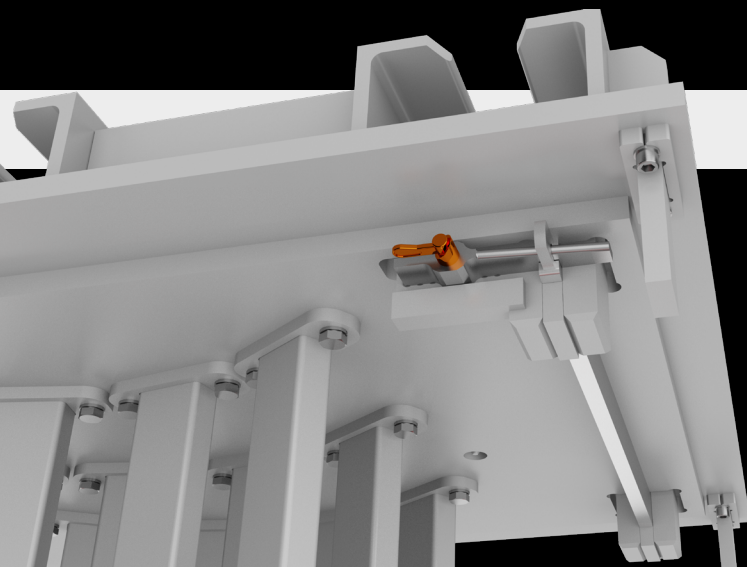
**TOOLS. Molds.** Driven by knowledge.

**CARE. Service.**

**Facts & advantages:**

- » Maximum mold accuracy due to internal KOBRA quality standard
- » Project-based production of small series
- » Modular concept with individually replaceable wearing parts
- » Higher cost efficiency through reuse of the frame

**EXPERTISE  
AT YOUR SIDE.**



**POWER**   
**Replace™**