

MULTIGROOVE™

The FEATURE »Multigroove™« describes holding grooves in the insert walls, which hold the block while the mold lifts up from the production board. There are four standard options available to choose from, depending on the block dimensions. Inquire about individual holding systems.

Facts & advantages:

- » improved retention of the stones in the concrete block mold until the demolding process
- » can also be used with draw-plates and products with bottom profiling
- » product-specific retention systems



DESIGN WITH MOLDS.

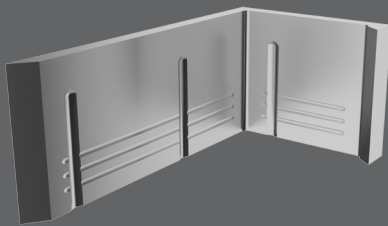
TOOLS. Molds. Driven by knowledge. **CARE. Service.**



EXPERTISE
AT YOUR SIDE.

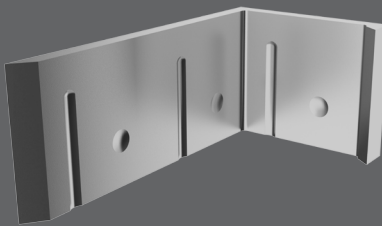
FEATURE 
Multigroove 1|2|3|4™

»Multigroove 1™«



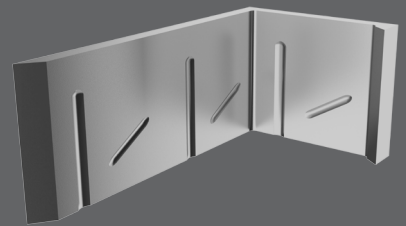
» all round groove

»Multigroove 2™«



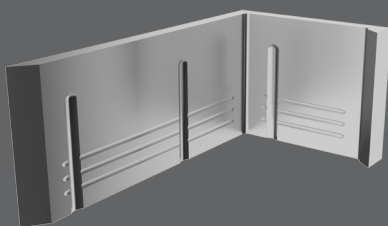
» inclined holding grooves

»Multigroove 3™«



» point holding grooves

»Multigroove 4™«



» negative tapered cavity with holding grooves

WE ARE
HERE FOR YOU.