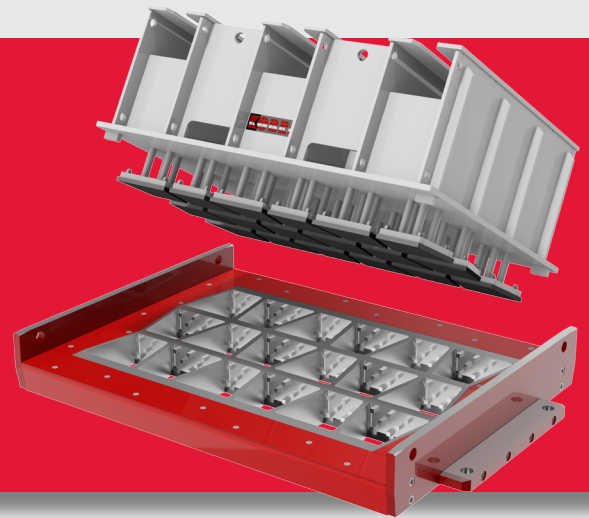


**FLAMECUT
CARBO 68 plus™**

With the KOBRA hardness standards, extremely high hardness can be achieved and thus particularly robust and wear-resistant concrete block molds can be produced. Different hardening processes are used, depending on the mold technology, to help to achieve smooth production processes.

**DESIGN
WITH
MOLDS.**

**EXPERTISE
AT YOUR SIDE.**



TOOLS. Molds. Driven by knowledge.

CARE. Service.



**EXPERTISE
AT YOUR SIDE.**

»Flamecut carbo 68 plus™«

Improvement in the wear resistance of concrete block molds with completely flame cut and manually polished cavity walls is achieved using the »Flamecut carbo 68 plus™« hardening process which, depending on the production parameters in the precasting plant, can make a decisive contribution to extending the service life.

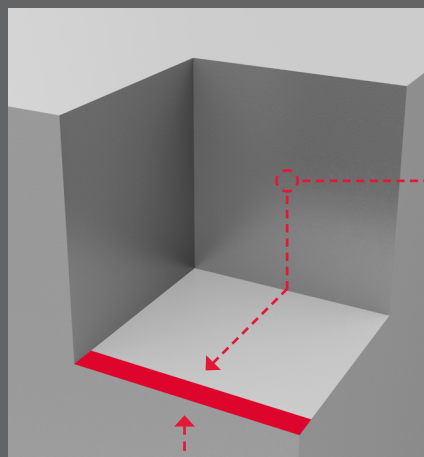
The disadvantages of conventionally flame-cut molds are eliminated by the carbo hardening process, which doubles the protective effect of the mold casing by an all-round hardness depth of 1.2mm.

**WE ARE
HERE FOR YOU.**

FORM 
Flamecut carbo 68 plus™

Facts & advantages:

- » Highest quality standard for hardness and wear resistance through further development of the carbo hardening process
- » Hardness quality 68 HRC
- » Homogeneous hardness depth 1.2mm
- » Suitable for rustic briquet and tumbled pavers



**Hardness quality 68 HRC
Hardness depth 1.2mm**