

MULTIGROOVE™

The FEATURE »Multigroove™« describes holding grooves in the insert walls, which hold the block while the mold lifts up from the production board. There are four standard options available to choose from, depending on the block dimensions. Inquire about individual holding systems.

Facts & advantages:

- » improved retention of the stones in the concrete block mold until the demolding process
- » can also be used with draw-plates and products with bottom profiling
- » product-specific retention systems



FEATURE 
Multigroove 1|2|3|4™

TOOLS. Molds. Driven by knowledge.

CARE. Service.

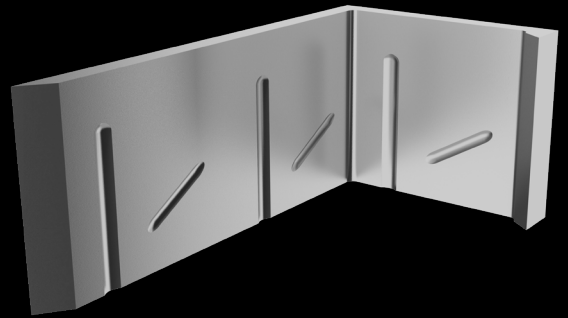
»Multigroove 1™«

» all round groove



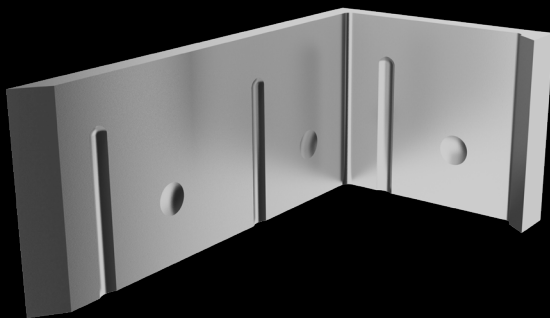
»Multigroove 2™«

» inclined holding grooves



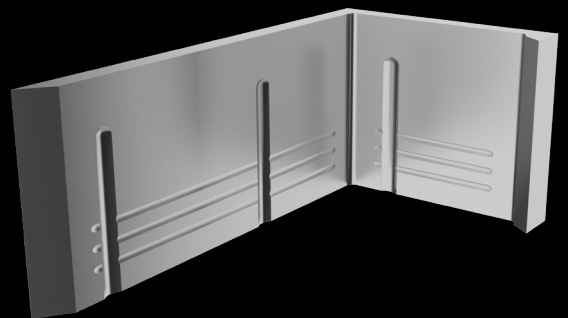
»Multigroove 3™«

» point holding grooves



»Multigroove 4™«

» negative tapered cavity with holding grooves



EXPERTISE
AT YOUR SIDE.

Detailed information can be obtained from our sales team.
www.kobragroup.com
info@kobragroup.com